



CAPE TOWN: ☎ 021 001 8686 ✉ sales@mcmco.co.za

GAUTENG: ☎ 012 030 3451 ✉ info@mcmco.co.za

www.MCMCO.co.za

REG NO: 2008/038487/23



MCM

SKIDSTEER ATTACHMENTS

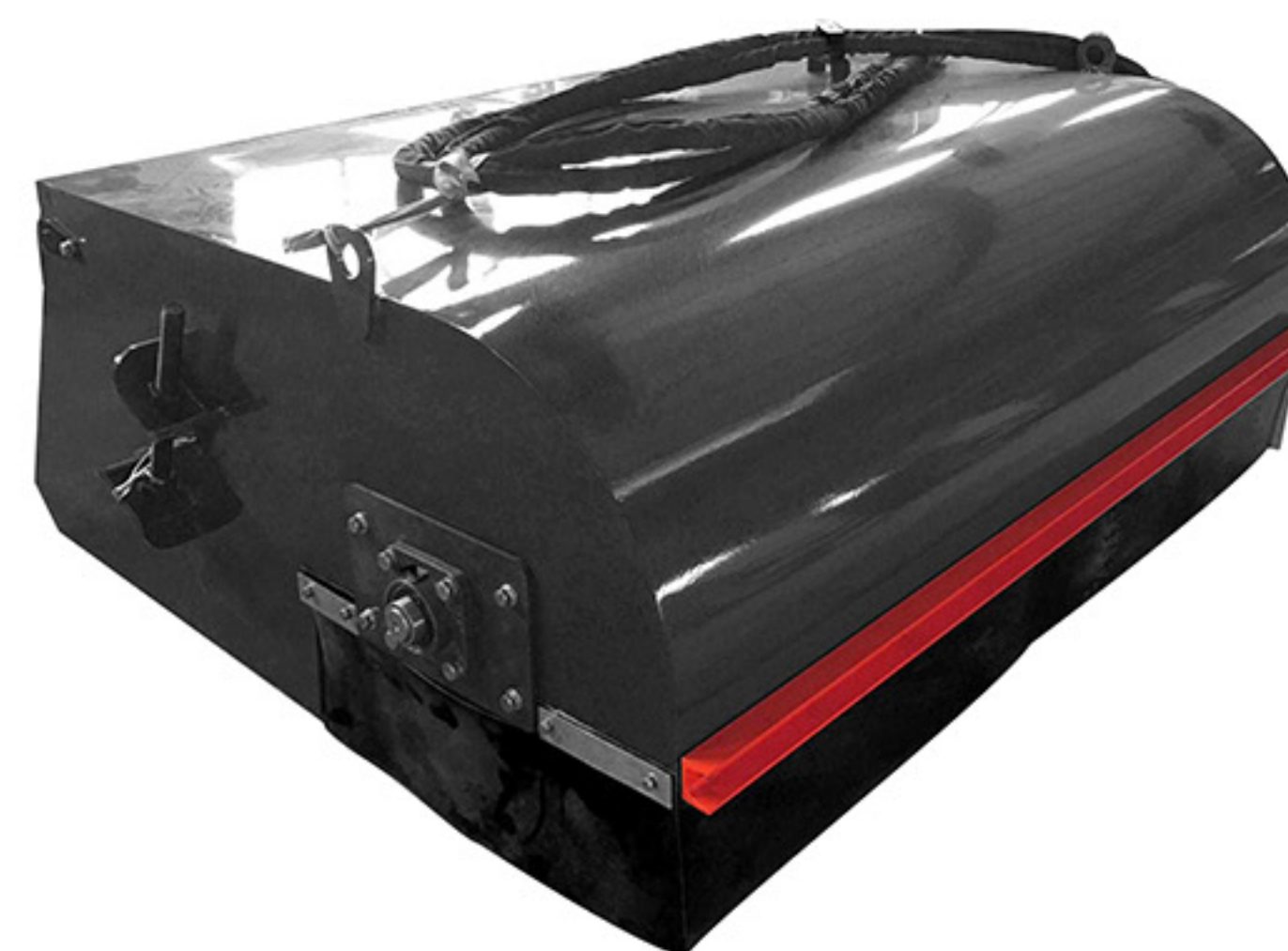
CATALOGUE 2024



CONTENTS

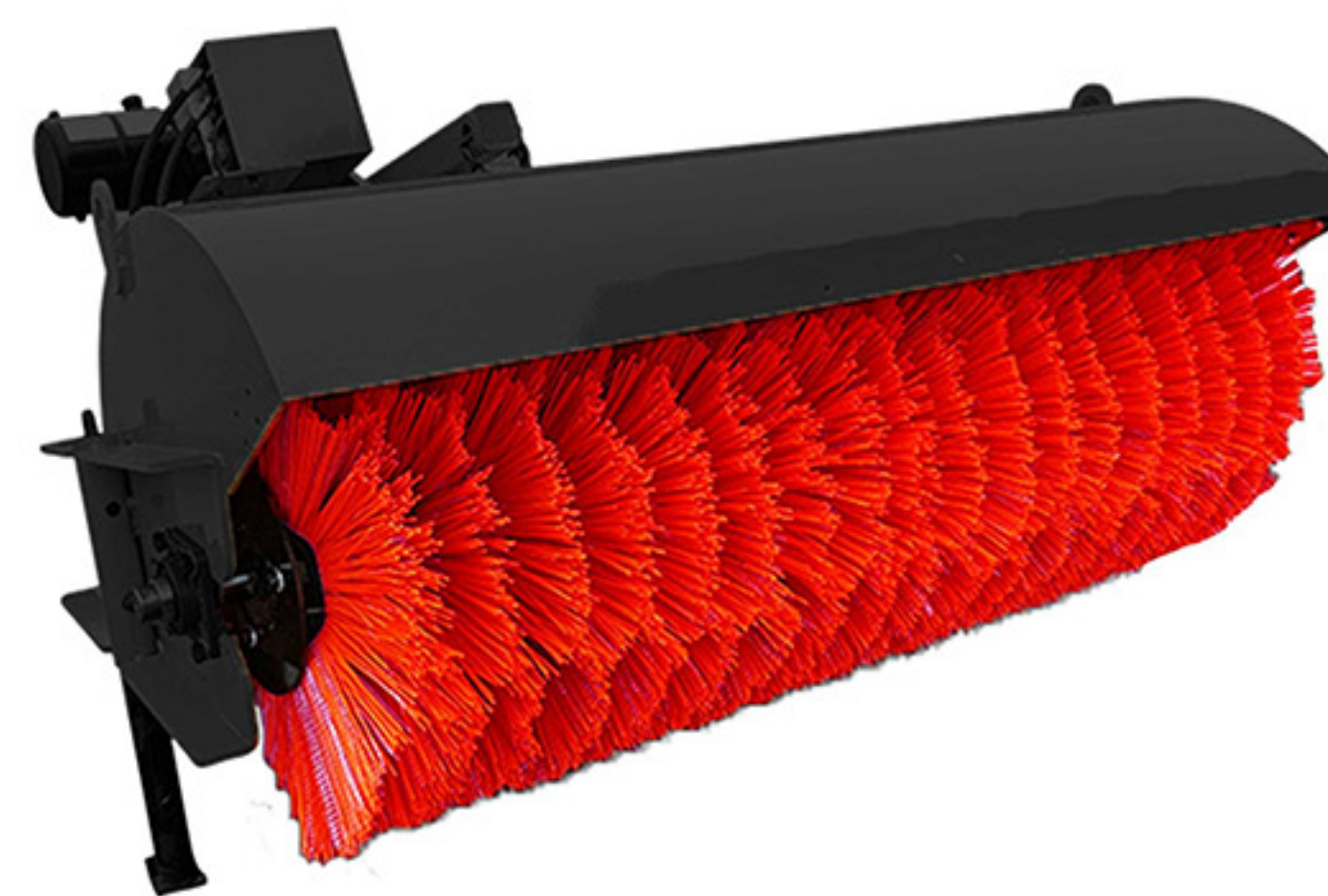
- 2 Pick up sweeper
- 2 Angle sweeper
- 3 Forest mulcher
- 3 Trencher
- 4 Grass cutter
- 4 Vibratory roller
- 5 Grass grapple
- 5 Bucket grapple
- 6 Standard bucket
- 6 4 in 1 bucket
- 7 Snow blade
- 7 Snow thrower
- 8 Backhoe arm
- 8 Auger
- 9 Hydraulic breaker
- 9 Planer
- 10 Pallet fork
- 10 Mixer bucket
- 11 Rock bucket
- 11 Dozer blade
- 12 Wood chipper
- 12 Soil tiller
- 13 Tree spade
- 13 Soft clamp
- 14 Stump grinder
- 14 Road cutting saw

Pick up Sweeper 🔥🔥🔥🔥



Model	Unit	60"	72"	84"
Weight	kg	420	470	560
	Lbs	924	1034	1232
Opening Width	mm	1520	1820	2130
	Inches	60	72	84
Brush Diameter	mm	660	660	660
	Inches	26	26	26
Storage Capacity	m ³	0.4	0.5	0.6
Operation Pressure	Mpa	16	16	16
Oil flow	l/min	50-90	50-90	50-90
	Gpm	13-24	13-24	13-24
L*W*H	m	1.4*1.7*0.7	1.4*2*0.7	1.4*2.3*0.7

Angle Sweeper 🔥🔥🔥🔥



Model	Unit	60"	72"	84"
Weight	kg	550	600	650
	Lbs	1210	1320	1430
Opening Width	mm	1520	1820	2130
	Inches	60	72	84
Brush Diameter	mm	560/670	560/670	670/800
	Inches	22/26	22/26	26/32
Rotation Angle	Drgree	±30	±30	±30
Operation Pressure	Mpa	16	16	16
Oil flow	l/min	50-90	50-90	50-90
	Gpm	13-24	13-24	13-24
L*W*H	m	1.6*2*0.8	1.6*2.3*0.8	1.6*2.6*0.8

Forest Mulcher 🔥🔥🔥🔥🔥



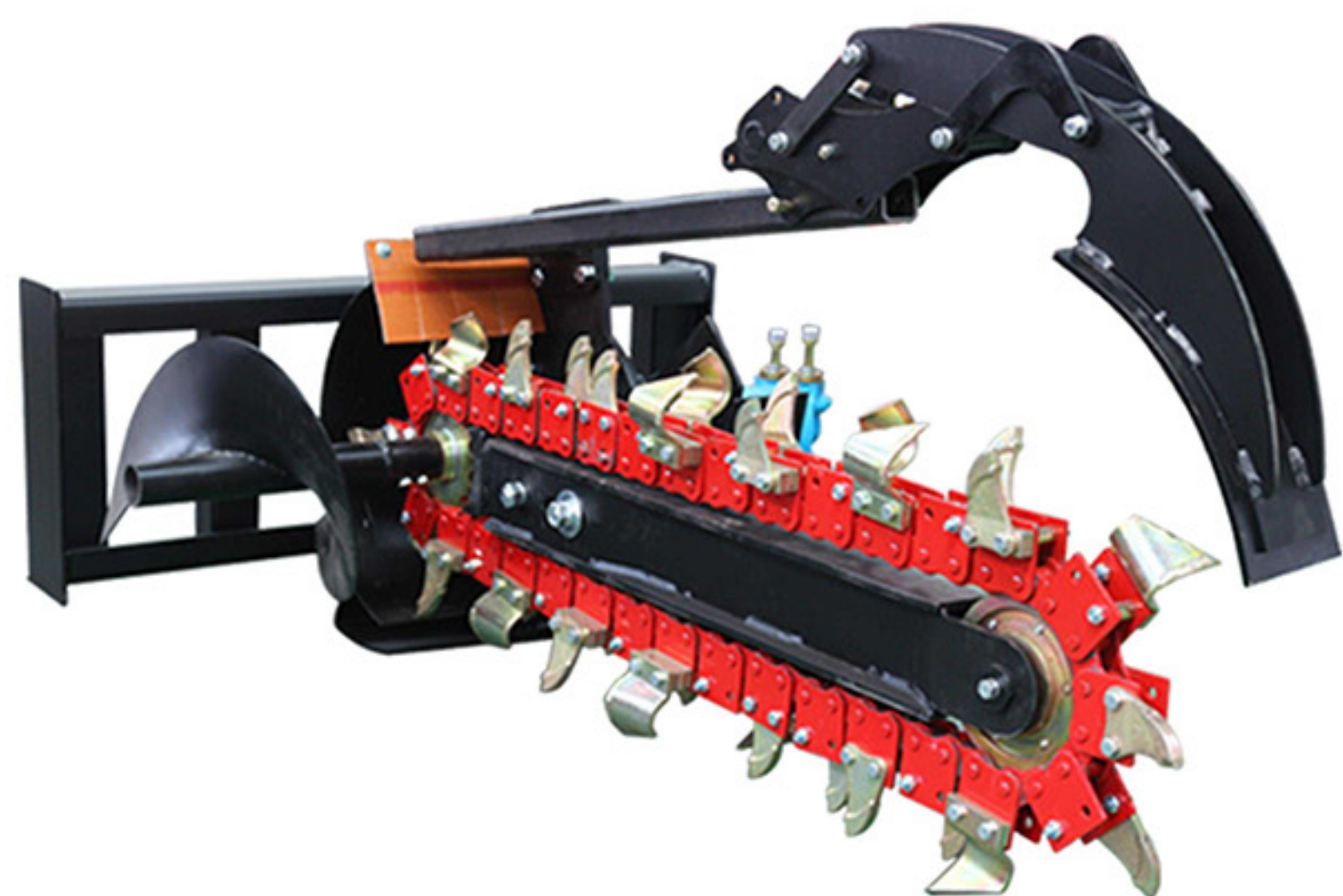
Model	Unit	60"	72"	84"
Weight	kg	1150	1250	1380
	Lbs	2530	2750	3036
Opening Width	mm	1524	1680	1830
	Inches	60	72	84
Number of teeth	Pcs	36	44	52
Required Host Machine	HP	Aboved 70HP	Aboved 80HP	Aboved 100HP
	KW	52	60	75
Operation Pressure	Mpa	14-21	14-21	14-21
Oil flow	l/min	100-140	120-150	120-150
	Gpm	27-37	32-40	32-40
L*W*H	m	1.5*1.9*1.65	1.5*2.2*1.65	1.5*2.4*1.65

Grass Cutter 🔥🔥🔥🔥🔥



Model	Unit	60"	72"	84"
Weight	kg	446	635	1000
	Lbs	981.2	1397	2200
Cutting Width	mm	1530	1830	2140
	Inches	60	72	84
Cutting Blade	Pcs	2	2	2
Min Cutting Height	mm	50	50	50
	Inches	2	2	2
Oil flow	l/min	60-80	75-90	75-90
	Gpm	16-21	20-23	20-23
L*W*H	m	2*1.7*0.6	2.3*2*0.6	2.7*2.3*0.8

Trencher 🔥🔥🔥🔥



Model	Unit	36"	48"
Weight	kg	460	520
	Lbs	1012	1144
Trenching Depth	mm	915	1220
Trenching Width	mm	200	300
Number of teeth	Pcs	29	29
Oil flow	l/min	50-100	75-100
	Gpm	13-26	20-26
L*W*H	m	1.9*1.2*0.9	2.9*1.4*0.9

Vibratory Roller 🔥🔥🔥🔥



Model	Unit	60"	72"	84"
Operating Weight	kg	872	1104	1231
	Lbs	1918.4	2428.8	2708.2
Drum Width	mm	1530	1830	2140
	Inches	60	72	84
Drum Diameter	mm	530	609	609
	Inches	21	24	24
Vibration Force	Kn	31	39	43
Vibration Speed	Vpm	2600	2600	2600
Drum Inclination	degree	15	15	15
L*W*H	m	0.9*1.7*0.6	1*2*0.8	1*2.3*0.8

Grass Grapple 🔥🔥🔥🔥🔥



Model	Unit	60"	72"	84"
Operating Weight	Kg	480	527	652
	Lbs	1056	1159	1435
Total Length	mm	1530	1830	2140
	Inches	60	72	84
Grapple Open Height	mm	1245	1245	1245
	Inches	49	50	51
Tooth space	mm	240	240	240
	Inches	9	9	9
Working Pressure	Mpa	16	16	16
L*W*H	m	1.5*0.7*1	1.8*0.7*1	2.2*0.7*1

Standard Bucket 🔥🔥🔥🔥



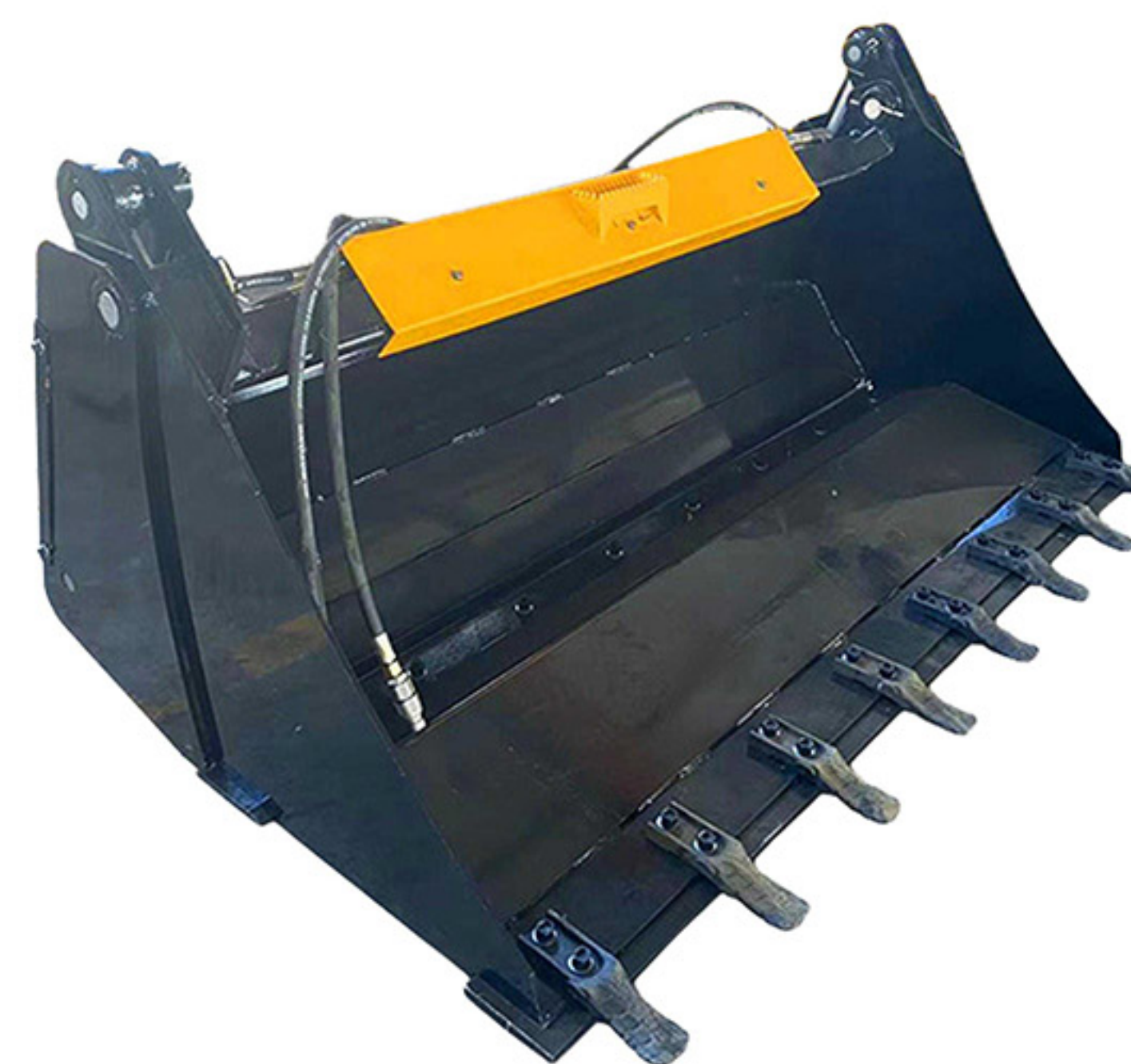
Model	Unit	60"	72"	84"
Weight	kg	240	280	320
	Lbs	528	616	704
Total Width	mm	1530	1830	2140
	Inches	60	72	84
Total Length	mm	812	812	812
	Inches	32	32	32
Total Height	mm	508	508	508
	Inches	20	20	20
Storage Capacity	m3	0.34	0.42	0.5
L*W*H	m	0.9*1.5*0.6	0.9*1.9*0.6	0.9*2.2*0.6

Bucket Grapple 🔥🔥🔥🔥🔥



Model	Unit	60"	66"	72"
Operating Weight	Kg	360	420	475
	Lbs	794	926	1047
Overall Length	mm	915	915	915
	Inches	36	36	36
Overall Width	mm	1530	1680	1830
	Inches	60	66	72
Open height	mm	864	864	864
	Inches	34	34	34
Closed height	mm	502	502	502
	Inches	20	20	20
L*W*H	m	0.9*1.5*0.9	0.9*1.7*0.9	0.9*1.9*0.9

4 in 1 Bucket 🔥🔥🔥🔥



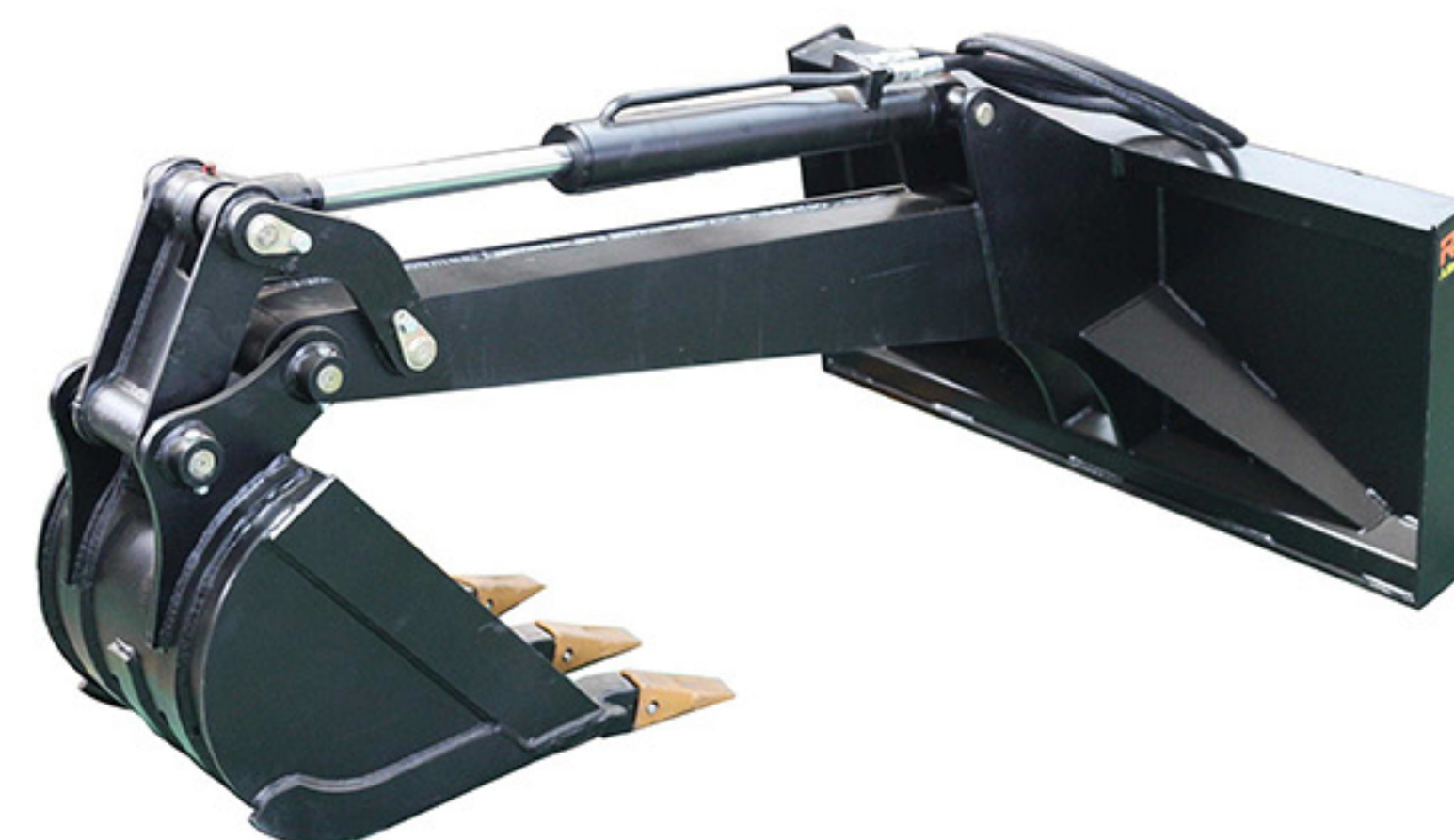
Model	Unit	60"	72"	84"
Weight	kg	385	460	542
	Lbs	847	1012	1192
Total Width	mm	1530	1830	2140
	Inches	60	72	84
Open Distance	mm	718	718	900
	Inches	28	28	36
Clamping Force	N	8230	8230	8230
Capacity	m³	0.4	0.44	0.52
Pressure	Mpa	20	20	20
L*W*H	m	0.9*1.6*0.8	0.9*1.9*0.8	1*2.2*0.9

Snow Blade



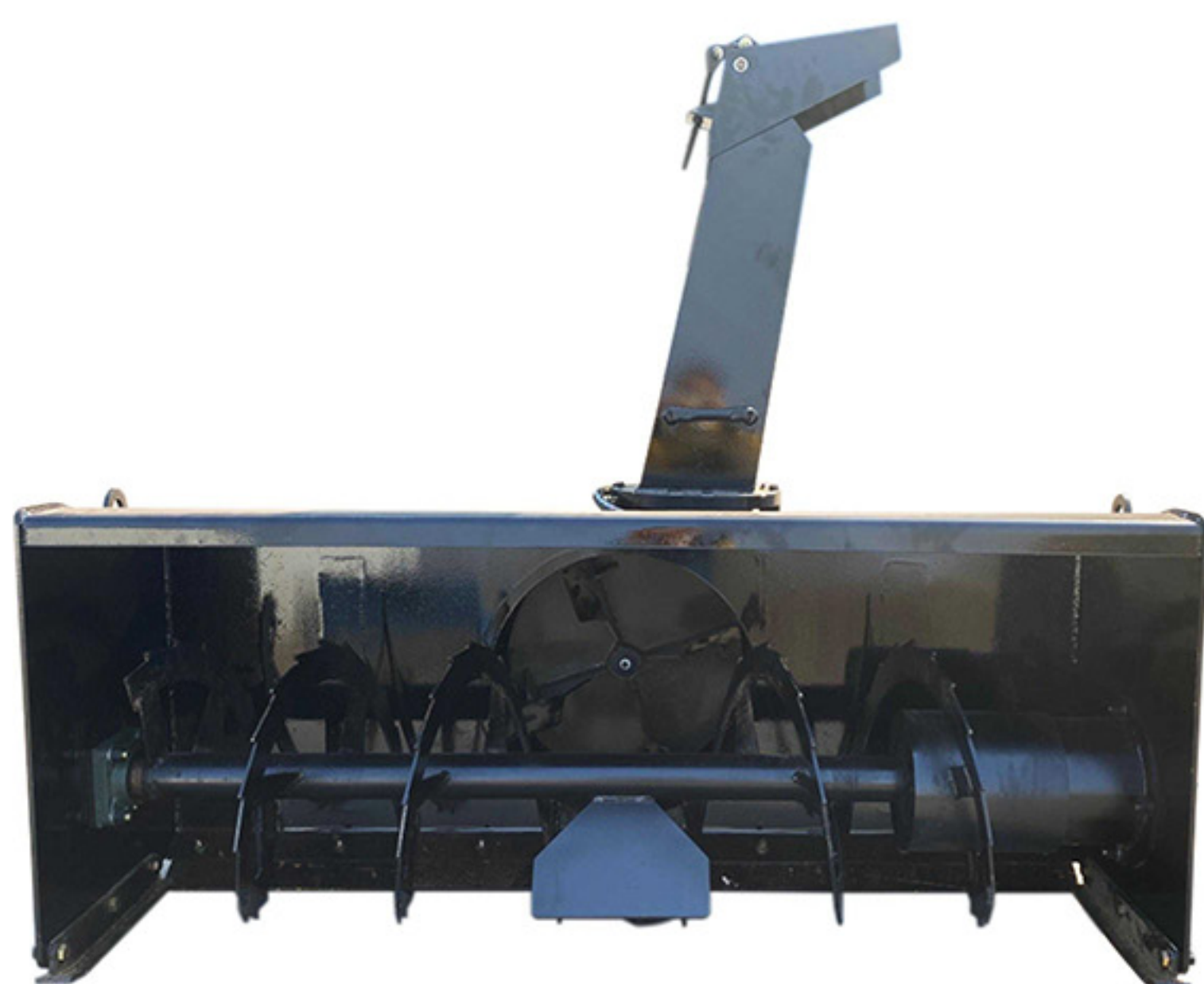
Model	Unit	60"	72"	84"
Operating Weight	kg	280	350	380
	Lbs	616	770	836
Operating Width	mm	1520	1830	2130
	Inches	60	72	84
Total Length	mm	1080	1080	1080
	Inches	43	43	43
Rotation Angle	degree	±30	±30	±30
Working Pressure	Mpa	16	16	16
L*W*H	m	1.1*1.5*0.8	1.1*1.9*0.8	1.1*2.2*0.8

Backhoe Arm



Model	Unit	BK001
Weight	kg	300
	Lbs	665
Bucket width	mm	380
	Inches	15
Max digging depth	mm	2000
	Inches	79
Capacity	m3	0.06
Pressure	Mpa	16
L*W*H	m	1.8*1.2*0.7

Snow Thrower



Model	Unit	60"	72"	84"
Operating Weight	Kg	400	480	550
	Lbs	880	1056	1210
Operating Width	mm	1520	1820	2130
	Inches	60	72	84
Operating Height	mm	980	980	980
	Inches	39	39	39
Working Pressure	Mpa	16-18	16-18	16-18
L*W*H	m	1.2*1.6*1	1.2*1.9*1	1.2*2.2*1

Auger



Model	Unit	REA3500	REA5500	REA7000
Torque	N.m	3614	5910	6931
	Ft-lb	4897	8008	9392
Pressure	Bar	240	240	240
	Psi	3481	3481	3481
Oil Flow Range	l/min	30~68	45~83	61~121
	gpm	8-18	12-22	16-32
Rotary Speed	rpm	32~72	28~50	37~72
Auger Length	mm	1200	1500	1500
	inches	47	59	57
Auger dia.	mm	250	300	350
	inches	10	12	14

Hydraulic Breaker 🔥🔥🔥🔥🔥



Model	Unit	RHB53	RHB75
Body weight	Kgs	89	214
	Lbs	196	471
Total weight	Kgs	180	450
	Lbs	396	990
Chisel diameter	mm	53	75
	Inches	2	3
Operating pressure	Psi	1280-1704	1704-2130
	Bar	88-117	118-147

Pallet Fork 🔥🔥🔥



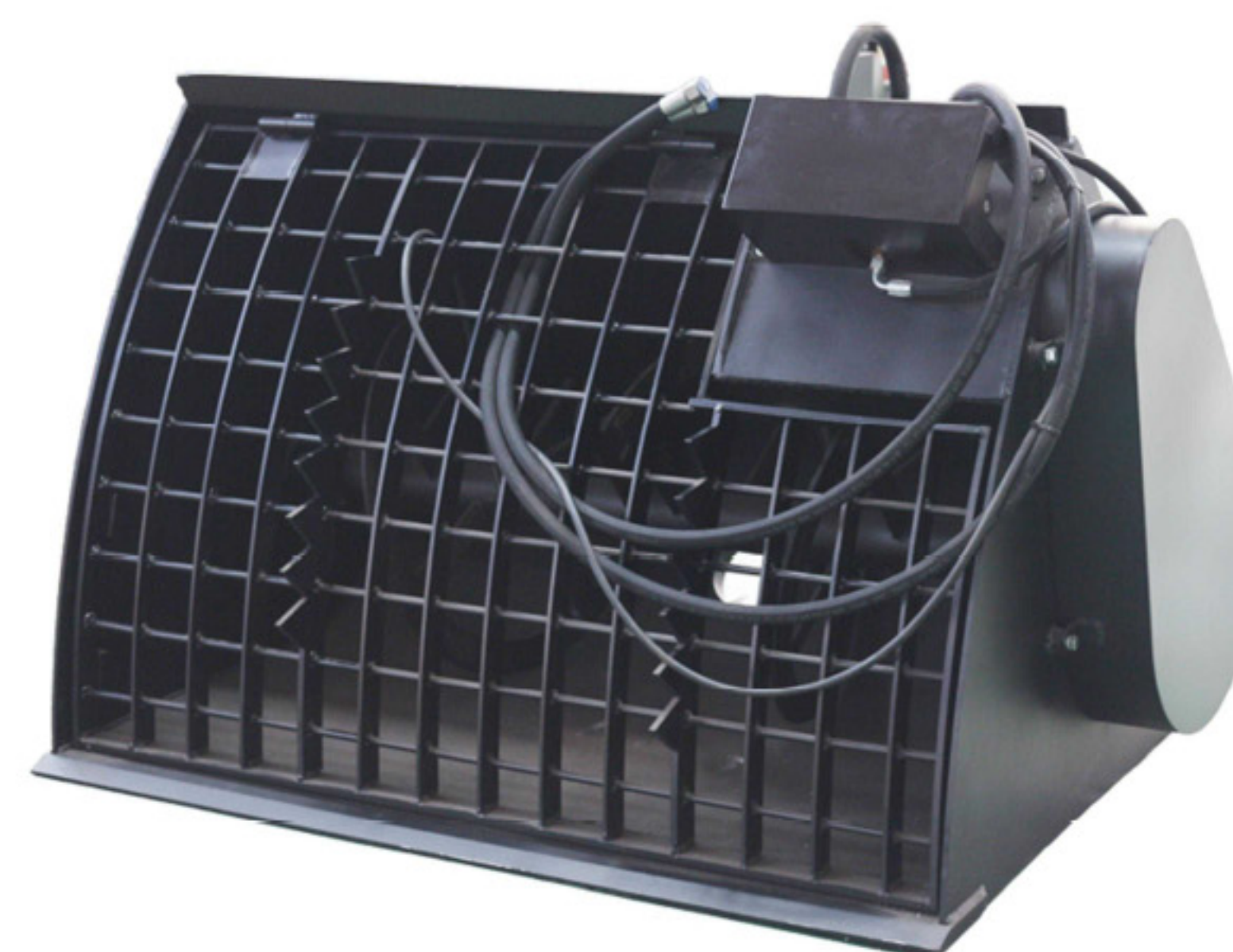
Model	Unit	45"	60"
Weight	kg	165	210
	Lbs	363	462
Max adjustable tine spacing	mm	1143	1524
	Inches	45	60
Min adjustable tine spacing	mm	230	230
	Inches	9	9
Fork tine length	mm	1100	1100
	Inches	43	43
Assembly distance	mm	380	380
	Inches	15	15
Load capacity	Kgs	1000	1500
L*W*H	m	1.3*1.2*0.9	1.3*1.6*0.9

Planer 🔥🔥🔥



Model	Unit	RCP300	RCP400	RCP600
Weight	Kg	614	760	964
	Lbs	1351	1672	2121
Planing Width	mm	300	400	600
	Inches	12	16	24
Max Planing depth	mm	110	152	152
	Inches	4	6	6
Oil flow	l/min	60-150	100-180	120-200
	Gpm	16-40	26-48	31-53
Working pressure	Mpa	16-21	16-21	16-21
Number of teeth	Pcs	26	34	42
Drum Inclination	Degree	15	15	15
L*W*H	m	1.5*1.7*0.9	1.5*1.7*0.9	1.5*1.7*0.9

Mixer Bucket 🔥🔥🔥



Model	Unit	50"
Weight	kg	380
	Lbs	840
Total Length	mm	1250
	Inches	50
Pressure	MPa	16-21
Storage Capacity	m3	0.3
L*W*H	m	1.3*1.05*1

Rock Bucket



Model	Unit	60"	72"	84"
Weight	kg	280	320	360
	Lbs	616	704	792
Total Width	mm	1584	1889	2195
Total Length	Inches	60	72	84
	mm	812	812	812
Max flow	Inches L/min	32	32	32
		70	70	70
Max pressure	Mpa	20	20	20
Max Frequency	HZ	12	12	12
Max Exciting Force	KN	1.5	1.5	1.5
Storage Capacity	m3	0.34	0.42	0.5
L*W*H	m	0.9*1.5*0.6	0.9*1.9*0.6	0.9*2.2*0.6

Wood Chipper



Model	Unit	72"
Weight	kg	520
	Lbs	1144
Maximum crushing diameter	mm	75
	Inches	3
Length	mm	1500
	Inches	59
Width	mm	1800
	Inches	71
Height	mm	1800
	Inches	71
Operation Pressure	Mpa	18-21
Oil flow	l/min	50-75
	Gpm	13-20
L*W*H	m	1.5*1.8*1.8

Dozer Blade



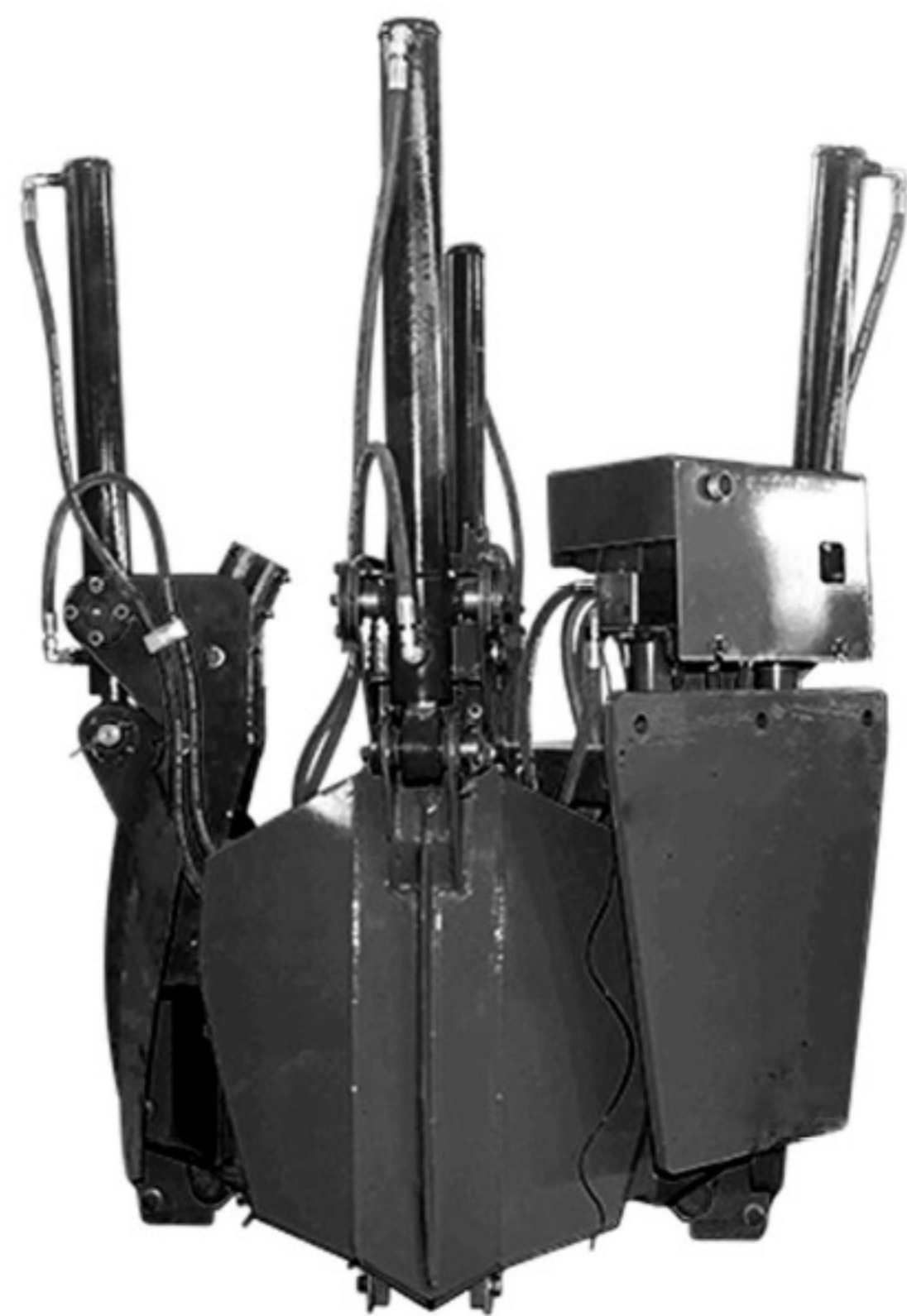
Model	Unit	60"	72"	84"
Operating Weight	kg	500	530	550
	Lbs	1100	1166	1210
Operating Width	mm	1520	1830	2130
	Inches	60	72	84
Total Length	mm	965	965	965
	Inches	38	38	38
Width when steer 30 degree	mm	1270	1520	1845
	Inches	50	60	73
Rotation Angle	degree	±30	±30	±30
Working Pressure	Mpa	16-21	16-21	16-21
L*W*H	m	1*1.6*0.7	1*1.9*0.7	1*2.2*0.7

Soil Tiller



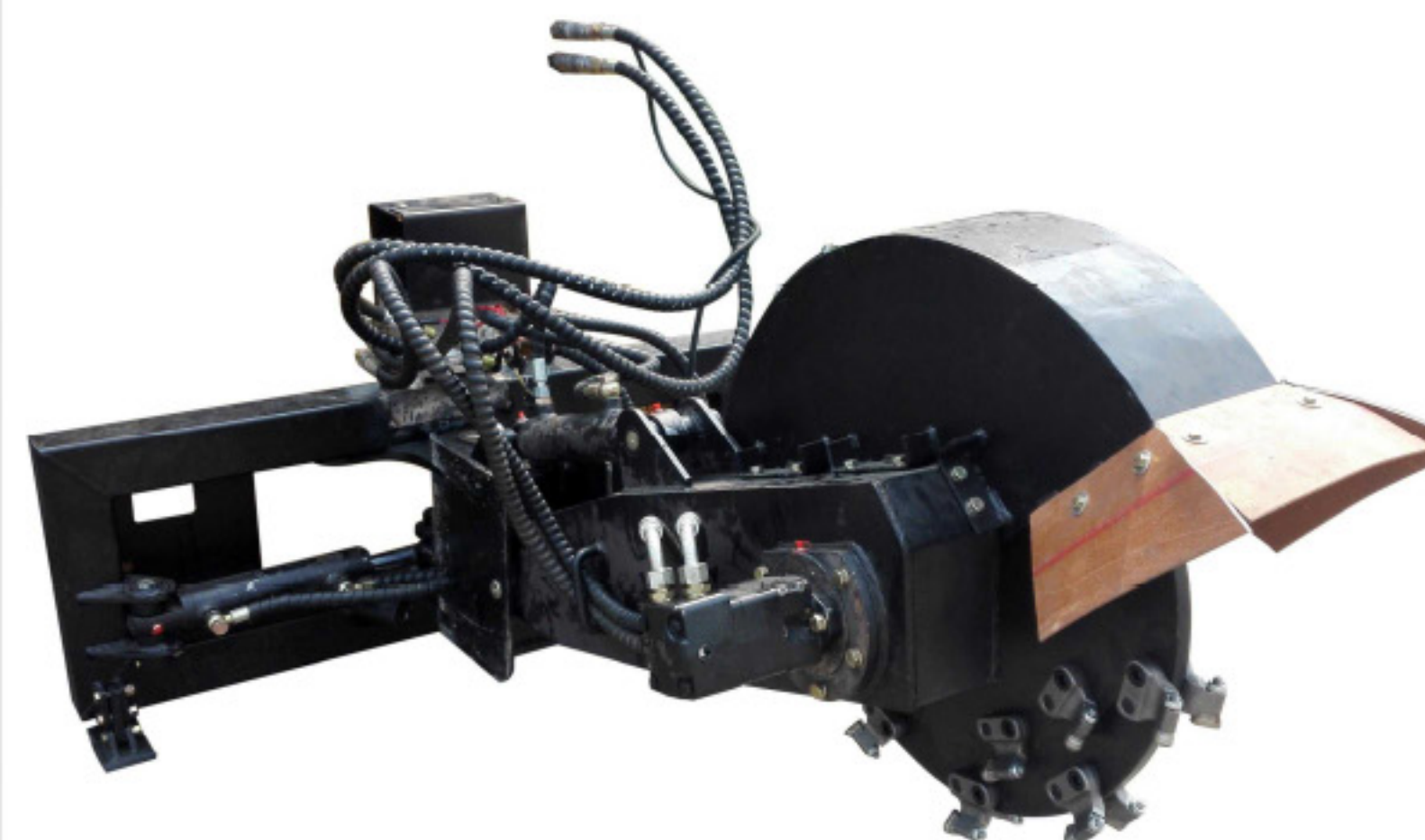
Model	Unit	72"
Weight	kg	300
	Lbs	660
Cultivation depth	mm	100
	Inches	4
Width	mm	1830
	Inches	72
Oil flow	l/min	16-21
	Gpm	4-5.5
L*W*H	m	2.2*1.2*0.8

Tree Spade



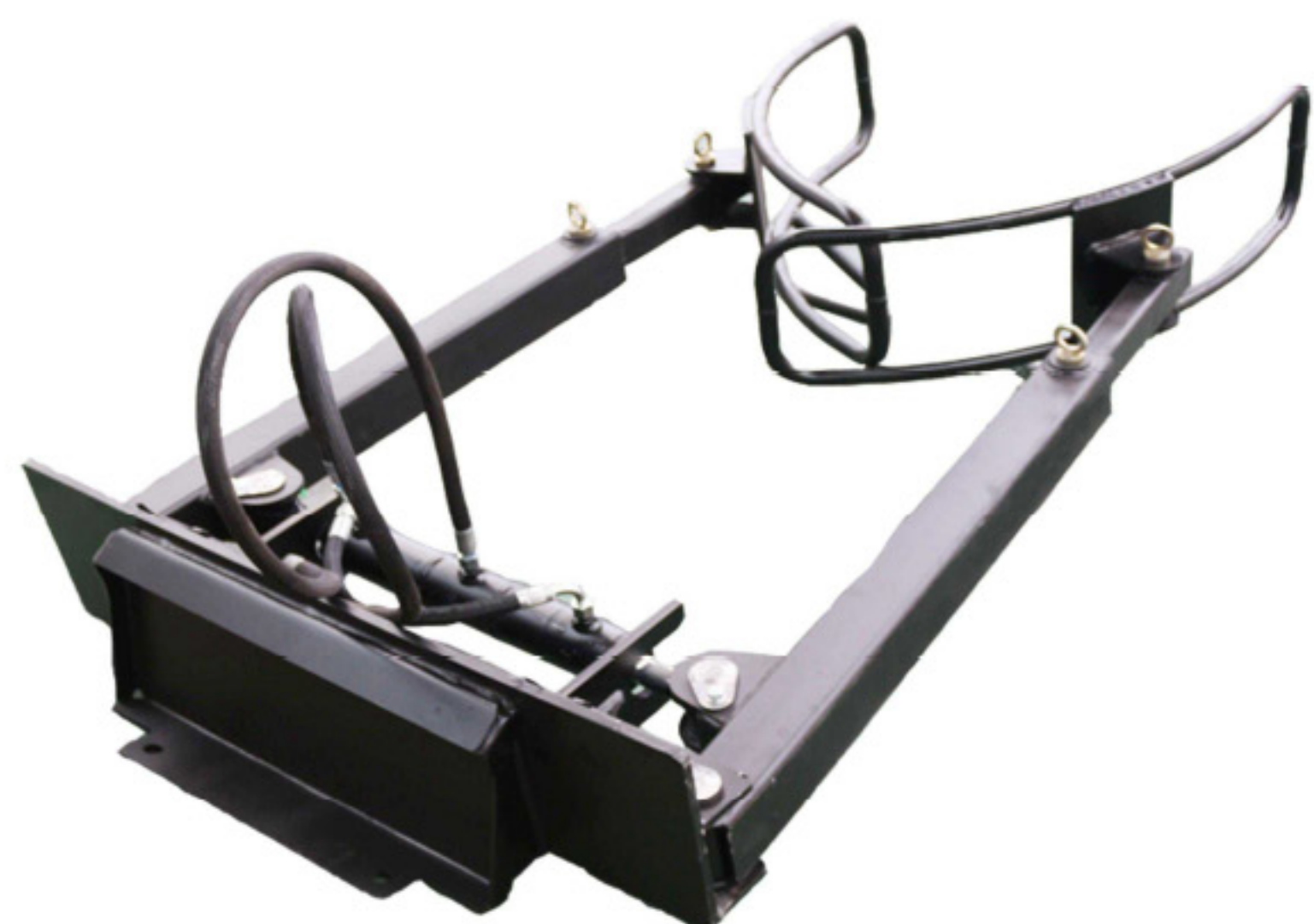
Model	Unit	R60	R80	R100	R120
Airload weight	kg	830	1050	1100	2000
	Lbs	1826	2310	2420	4400
Diameter of tree	mm	50-120	80-150	120-200	150-250
	Inches	2-5	3-6	5-8	6-10
Bulb diameter(A1)	mm	Φ600	Φ800	Φ1000	Φ1200
	Inches	24	32	40	47
Bulb diameter(A2)	mm	Φ300	Φ400	Φ500	Φ600
	Inches	12	16	20	24
Tree ball depth(B)	mm	450	600	600	620
	Inches	18	24	24	24.4
Work efficiency	pieces/H	≧ 70	≧ 70	≧ 60	≧ 50
Shovel knife/blade	piece	4	4	4	6
Sphere volume	m³	0.1	0.24	0.32	0.6
Suitable model:sliding machine	Skid steer loader	√	√	√	√
Suitable model	excavator	√	√	√	√

Stump Grinder



Model	Unit	RSG500	RSG600
Weight	kg	240	240
	Lbs	530	530
Max cut depth	mm	200	200
	Inches	8	8
Max cut diameter	mm	815	815
	Inches	32	32
Cutter diameter	mm	500	606
	Inches	20	24
Oli Flow	L/min	60-150	100-180
	Gpm	16-40	26-48
Pressure	Mpa	14-21	14-21
L*W*H	m	1.9*1.4*0.8	1.9*1.4*0.8

Soft Clamp



Model	Unit	35"
Weight	kg	340
	Lbs	748
work scope	mm	119-1422
	Inches	5-60
Work width	mm	880
	Inches	35
Fork tine length	mm	1100
	Inches	43
Assembly distance	mm	380
	Inches	15
Work pressure	MPa	16-21
L*W*H	m	1.2*1.7*0.7

Road Cutting Saw



Model	Unit	6"	9"
Weight	kg	360	420
	Lbs	792	924
Cutting depth	mm	160	240
	Inches	6.3	9.5
Cutting width	mm	5	5
	Inches	0.2	0.2
Length	mm	1686	1686
	Inches	66	66
Width	mm	1268	1268
	Inches	50	50
L*W*H	m	1.7*1.3*1.2	1.7*1.3*1.2